



DEPARTMENT OF COMPARATIVE LITERATURE
UNIVERSITY of WASHINGTON

Published on *Department of Comparative Literature* (<http://complit.washington.edu>)

[Home](#) > [People](#) > [Graduate Student](#) > Graduate Students

Name

Field of Interest

- Any - ?

Interdisciplinary Affiliation

- Any - ?

Search directory



Jacinthe Ahmed Assaad

Graduate Student, Comparative Literature

assaadj@uw.edu , PDL B-524

Office Hours: Thursdays 12:30-2:30 or by appointment

20th Century, Arabic, Comparative Literature, Culture, Drama, Film/Cinema, French, Gender, Women, and Sexuality Studies, Modernism, Poetry and Poetics , Plague writing, Contemporary Egyptian Cinema, Representations of (female) bodies, Feminisms, Citizen and nation

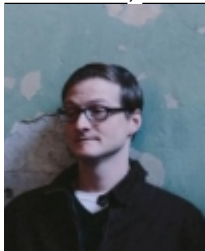


Douglas Anderson

Graduate Student, Comparative Literature

anderdou@uw.edu

Aesthetics, Film/Cinema, Literature, Philosophy

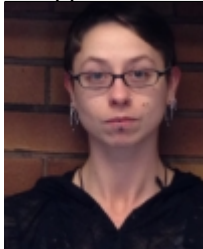


William Arighi

Graduate Student, Comparative Literature

warighi@uw.edu

19th Century, 20th Century, Caribbean, Global and Transnational Studies, Latin American, Literary Criticism, Philippine and Filipino American, Postcolonial, Southeast Asian



Megan Bertelsen

Graduate Student, Comparative Literature

mbertels@uw.edu



Russel Black

Graduate Student, Comparative Literature

rcblack@uw.edu



Richard Boyechko

Graduate Student, Comparative Literature

boyechko@uw.edu , SAV 417

Office Hours: Tue/Thu 14:00-15:00

20th Century, Chinese, Critical Theory, Literary Criticism, Radical Pedagogy, Russian, Slavic, Textual Studies, Ukrainian

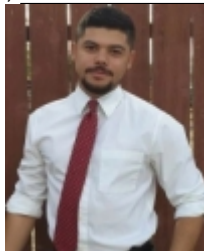


Lin Chen

Graduate Student, Comparative Literature

lchen3@uw.edu

Comparative Literature, English, Literature, Poetry and Poetics, Reception Studies, Romanticism, Textual Studies, Translation and Interpretation, Classical Chinese Poetry, East-West Studies



David De La Rocha

Graduate Student, Comparative Literature

ddlr@u.washington.edu



Andrea Delgado

Graduate Student, Comparative Literature

adelg@uw.edu, PDL B 217

Office Hours: T TH 1130-1230 and by appointment

Comparative Literature, Feminism and Feminist Theory, Gender, Women, and Sexuality Studies, Indigenous, Latino/a Studies, Postcolonial, Race and Ethnicity, Spanish, Border Studies in Literature



Juan Pablo DiCesare

Graduate Student, Comparative Literature

jpdc@uw.edu



Laura Eshleman

Graduate Student, Comparative Literature

laurabe@uw.edu

Office Hours: On Leave

19th Century, 20th Century, American, Asian American, Chinese, Critical Theory, English, Modernism, Translation and Interpretation , Travel and Writing, Transnational



Annie Fee

Graduate Student, Comparative Literature

annie3@uw.edu , CMU015

Office Hours: By appointment

20th Century, Gender, Women, and Sexuality Studies , Media Studies, History of cinema reception and audiences, French cultural history



Brad Gerhardt

Graduate Student, Comparative Literature

bgard4@uw.edu



Yizhong Gu

Graduate Student, Comparative Literature

yizhong@uw.edu , CMU 023



Donghee Han

Graduate Student, Comparative Literature

dhhan@uw.edu

Cinema & Visual Media, South Korean Cinema, Trauma Theories, Nationalism/Trans-nationalism, East Asian Culture



Qian He

Graduate Student, Comparative Literature

qianh@uw.edu , CMB B-015

Office Hours: F 14:30-15:30 or By appointment

East Asian, East European, Film/Cinema, Media Studies, Philosophy, Political Science, Popular Culture, Violence and Trauma, Visual Arts, Visual Culture , Trauma/Collective Memory/Memory Studies, Witness Literature, Children in Chinese Cinema, Childhood and Modernity

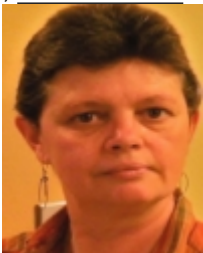


Yuta Kaminishi

Graduate Student, Comparative Literature

yutak2@u.washington.edu

Critical Theory, Digital Humanities, East Asian, Film/Cinema, Japanese, Media Studies, Television, Urban Studies , Visual Culture



Norma Kaminsky

Graduate Student, Comparative Literature

ninsky@uw.edu

21st Century, African, Comparative Literature, Latin American, Literature, Postcolonial, Spanish, Translation and Interpretation



Barbara Krystal

Graduate Student, Comparative Literature

barbarakrystal@gmail.com , 360-689-6456

Critical Theory, Diaspora Studies, Ecocriticism, Jewish Studies, Latin, Yiddish



Verena Kuzmany

Graduate Student, Comparative Literature

vkuzmany@uw.edu



Lise Lalonde

Graduate Student, Comparative Literature

llalonde@uw.edu , Padelford C-230

Office Hours: M 10:20-11:20 | F 12:30 - 1:30 & by appointment

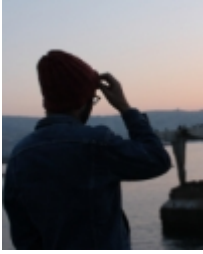
20th Century, American, Comparative Literature, Film/Cinema, French, Language Pedagogy, Novel/Prose Fiction, Poetry and Poetics, Translation and Interpretation, Visual Arts



Hee Eun Lee

Graduate Student, Comparative Literature

hlee921@u.washington.edu



Sebastian Lopez Vergara

Graduate Student, Comparative Literature
solopezv@u.washington.edu



Ericka Manthey

Graduate Student, Comparative Literature
emanthey@uw.edu



Mirjana Martinovic

Graduate Student, Comparative Literature
mm9@uw.edu



Cuauhtemoc Mexica

Graduate Student, Comparative Literature
mexica@uw.edu , PDL B-205

Office Hours: M&W, 1030 to 1130

20th Century, Film/Cinema, Global and Transnational Studies, Latin American, Latino/a Studies, Postcolonial, Spanish , Chicana/o Studies, Indigeneity and Nationalisms, Studies of Violence, Border Studies in Literature/Film/Arts



Katherine Morrow

Graduate Student, Comparative Literature

kjmorrow@uw.edu

20th Century, 21st Century, Chinese, Film/Cinema, Global and Transnational Studies, Visual Culture , New Media



Paul Morton

Graduate Student, Comparative Literature

pwm5@uw.edu



Yasaman Naraghi

Graduate Student, Comparative Literature

cyasin@uw.edu , PDL B-522

Office Hours: TTh 11:30-12:30

Art History, Comparative Literature, Critical Theory, French, Literature , Aesthetic Theory



Mimi Nielsen

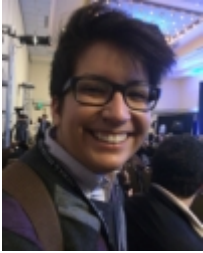
Graduate Student, Comparative Literature

miminiel@uw.edu



Adam Nocek

Graduate Student, Comparative Literature
anocek@uw.edu



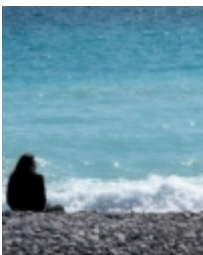
Treza Rosado

Graduate Student, Comparative Literature
tjrosado@uw.edu



Artur Rosman

Graduate Student, Comparative Literature
artur@uw.edu



Sarah Ross

Graduate Student, Comparative Literature
seross@uw.edu , COM 119

Office Hours: Friday 9-11; By Appointment

Film/Cinema, Italian, Philosophy, Poetry and Poetics, Psychology, Sociology , Modernism, Creative Genius and Mental Illness, Food Politics, Ecocriticism, Documentary Film



Andrea Schmidt

Graduate Student, Comparative Literature
[schmia@uw.edu](mailto:schia@uw.edu)

19th Century, Film/Cinema, German



Slaven Svetinovic

Graduate Student, Comparative Literature
slavens@uw.edu



Carolina Toscano

Graduate Student, Comparative Literature
ctoscano@uw.edu

19th Century, English, Spanish , motherhood, wet nursing, Feminist Theory



Milan Vidakovic

Graduate Student, Comparative Literature
milan@uw.edu , Padelford B-37



Alan-Michael Weatherford

Graduate Student, Comparative Literature

amgw@uw.edu , PDL C-232

Office Hours: Teaching in French this quarter. Tuesdays 1300-1400; Wednesdays 1200-1300; or by appointment. 20th Century, 21st Century, Critical Theory, Culture, French, Gender, Women, and Sexuality Studies, Latin American, Philosophy, Queer Studies, Spanish , Psychoanalysis, Caribbean

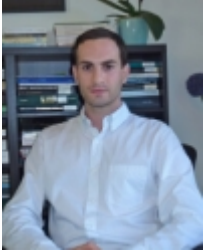


Nobuko Yamasaki

Graduate Student, Comparative Literature

ny27@uw.edu

Critical Theory, East Asian, Film/Cinema, Gender, Women, and Sexuality Studies, Japanese, Korean, Language Pedagogy , Classical Chinese, Wartime and Contemporary Japanese Popular Culture, Kobun and Kanbun



Patrick Zambianchi

Graduate Student, Comparative Literature

pdzam@uw.edu

European Romanticism, eighteenth and nineteenth-century aesthetic theory, moral philosophy.



Can Zhao

Graduate Student, Comparative Literature

zhaocan@uw.edu , SAV 417

Office Hours: M/W 11:00 - 12:00 A.M. and by appointment

Computational Linguistics, Critical Theory, Culture, Film/Cinema, Gender, Women, and Sexuality Studies, Literary Criticism, Media Studies, Modernism, Queer Studies, Textual Studies



Xiqing Zheng

Graduate Student, Comparative Literature

zhxiqing@uw.edu , CMU B105

Office Hours: By Appointment

Chinese, Comparative Literature, Film/Cinema, Gender, Women, and Sexuality Studies, Global and Transnational Studies, Japanese, Media Studies, Popular Culture, Reception Studies, Translation and Interpretation , Fan Culture

Department of Comparative Literature · University of Washington · Padelford Hall B531, Box 354338 · Seattle, WA 98195

Telephone: (206) 543-7542 · Fax (206) 685-2017 · Email: complit@uw.edu

Copyright © 2009-2015 [University of Washington](#) · [Privacy](#) · [Terms](#) · [Site Map](#) · [Contact Us](#)

Source URL: http://complit.washington.edu/people/graduate-student?page_id=216